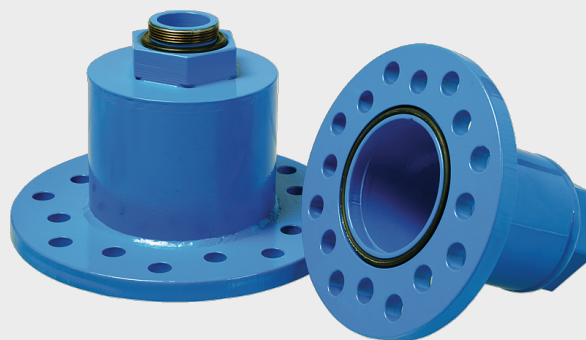
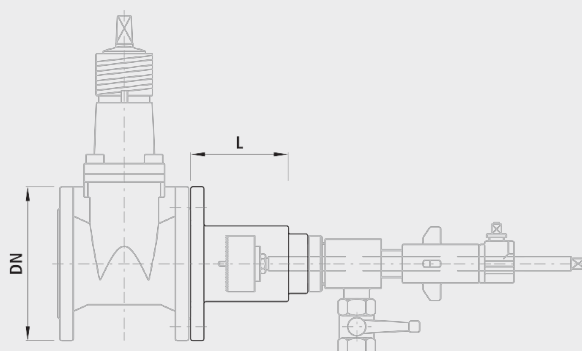


## Tapping bell with male thread 2"

8301



## Application

- Tapping can be carried out directly on a flanged slider under pressure by using this tapping bell and the Hawle tapping unit. The tapping bells are designed for flanges with different nominal widths. No additional tools are required.

## Characteristics

- The Hawle tapping unit can be very easily mounted onto the thread outlet.
- The internal area of the bell is arranged to such a size so as to accommodate all the standard milling cutters.
- The flange connection is prepared for two sizes.

## Material

- EWS-coated steel

## Caution

- Requires a special tapping rod (longer)

	DN	PN (bar)	L (mm)	weight (kg)
8301050000	50	16	135	3.400
8301080100	80-100	16	130	5.300
8301125150	125-150	16	130	8.900